

FUME-A-VENTSM

EXHAUST REMOVAL SYSTEMS

A product of Air Cleaning Specialists, Inc.

Maintain A Healthy
Work Environment At
A Fraction Of The Cost!

AS EASY AS 1 - 2 - 3

**MOST COST EFFECTIVE
SYSTEM AVAILABLE**

**EASY INSTALLATION
BY US OR YOU**

**MEETS OR EXCEEDS
CODES**

1



Install our Quick-Fit
clamp-together
ducting and fan.

2



Install our state-
of-the art Control
Panel

3



Drop our heat-resistant
hose and source-capture
nozzle from the ducting to
the vehicle exhaust

NORDFAB[®]
QUICK-FIT[™]

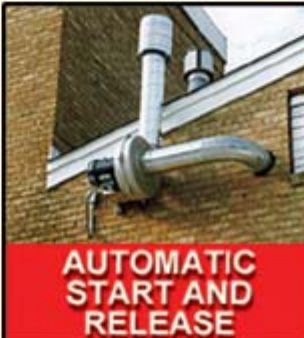
**The World's
Fastest Ducting!**

100% SOURCE CAPTURE!



Made In The USA

**EASY CONNECT
NOZZLE HAS A
POSITIVE SEAL
WITH A SOFT BOOT**



**AUTOMATIC
START AND
RELEASE**

ACS

AIR CLEANING SPECIALISTS, Inc.
826 Horan Drive Fenton, MO 63026
636-349-4400 Fax: 636-349-0556
Toll Free: 866-455-2132

fumeavent.com

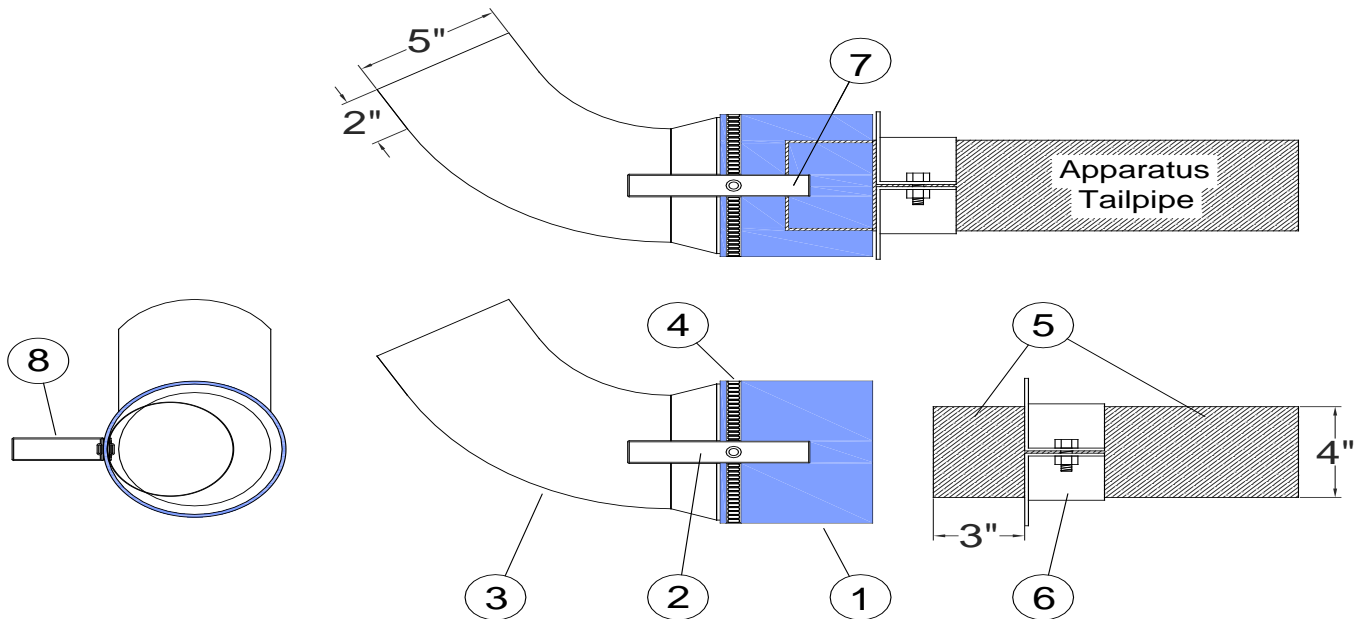
Fume-A-Vent Automatic Release Clamp On Nozzle

Date 9/17

Part No. TPA 15 05

Emergency Apparatus

TAB 13-C



- 1 **Rubber Nozzle** - 6" ID. Made of High temperature Synthetic Rubber.
** Shown in blue, colors may vary.
- 2 **Spring Clamp** - 6" x 2" spring clamp designed to clamp on vehicle tailpipe.
- 3 **Reducing Elbow** - 6" to 5" 60° stainless steel reducing elbow.
- 4 **Hose Clamp** - Stainless Steel hose clamp.
- 5 **Tailpipe** - 4" Vehicle exhaust system tailpipe.
- 6 **Tailpipe Adapter** - Clamp on tailpipe adapter. Designed to adjust the distance the **FUME-A-VENT** spring clamp clamps on to the tailpipe. Provides leverage for automatic release the when the apparatus exits the engine house.
- 7 Connected view shows the spring clamp connected to the apparatus tailpipe.
- 8 End view shows the 6" nozzle connected to 4" tailpipe.

Fume-A-Veny System Overview

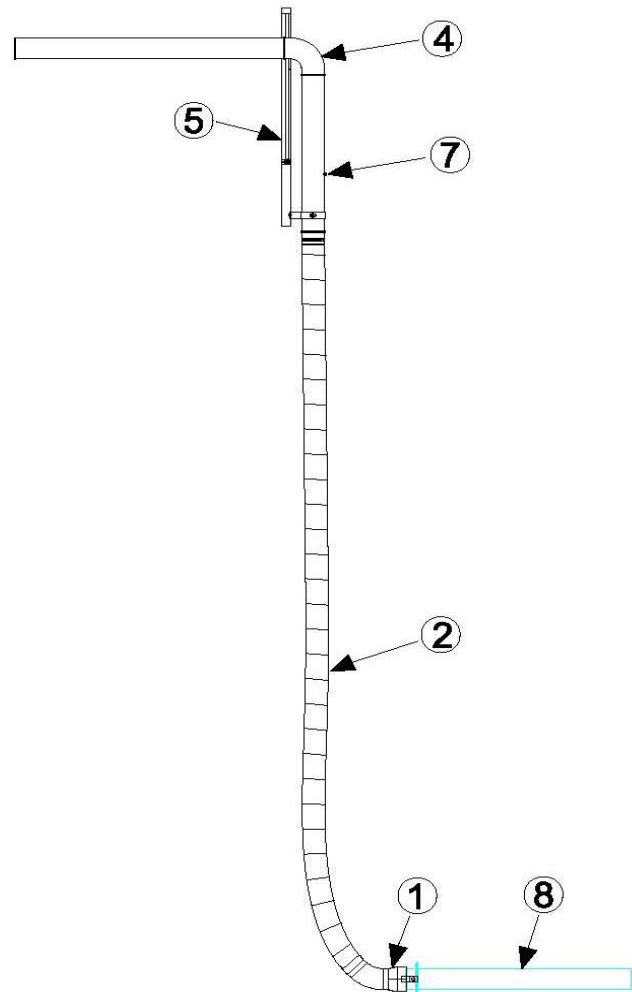
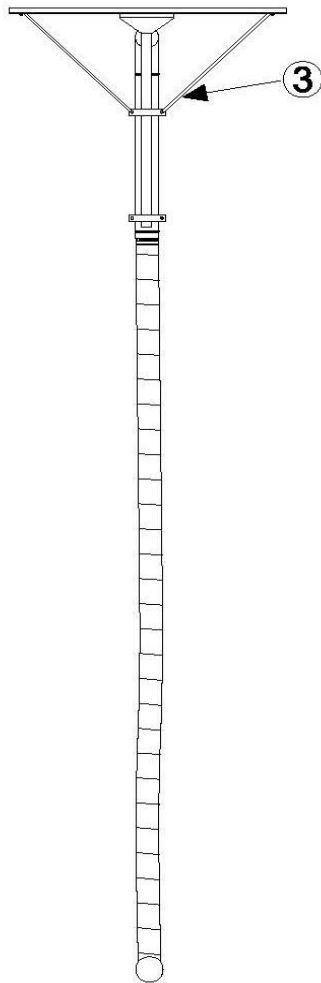
Date 09/17

Page C-10

Mounting Bracket Overview

TAB 13-C-12

1. Fume-A-Vent Stainless Steel Clamp on Nozzle
2. 5" x 12' High Temperature Hose
3. End View Mounting Bracket System
4. Nordfab Quick-Fit Clamp Together Laser Welded Duct System
5. Side View Mounting Bracket System
7. Pressure Sensor
8. Vehicle Tailpipe



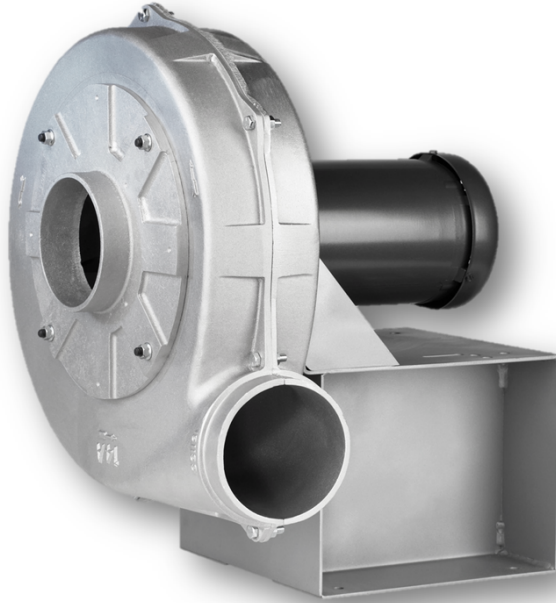
Fume-A-Vent PB Series - Pressure Blowers

Date 10/12

PBX-X-X-X

Fans And Blowers

TAB 12

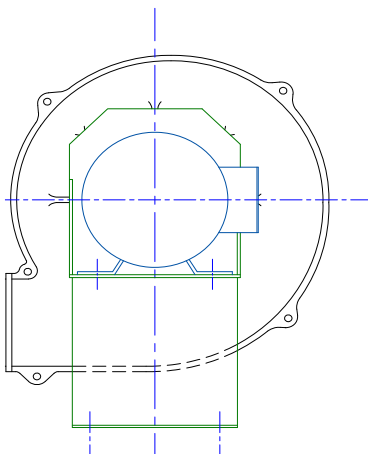


This exhaust fan is designed for the purpose of exhausting most particulates as well as volatile organic compounds (VOC's) created by internal combustion engines. These fans feature high pressure 3/16" minimum thickness radial flat wheels, direct drive, and are AMCA Type B spark resistant. Housing shall be of Aluminum/Magnesium alloy created by 2-piece construction with gaskets and steel hardware. Fan shall be in tested accordance with AMCA Standard #210.

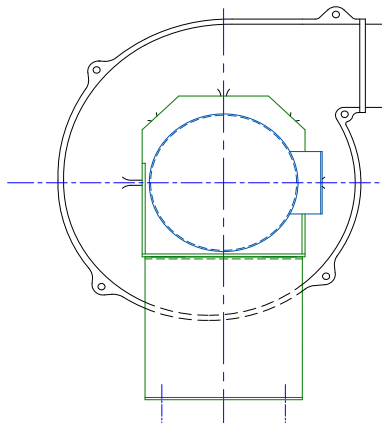
The motor is TEFC UL and CSA rated, and factory balanced by removal of material with no additional weights used. It shall run at 3450 RPM and can operate under normal temperatures up to 150 degrees. Motor bases made with 12 gauge steel minimum. High temperature upgrades available for use up to 400 degrees and 750 degrees. To be manufactured in the United States and meets all local, state, and federal government standards. Fan base is painted 10 gauge steel with Stainless Steel option.

We offer from 0.5 H.P. Motors to 10 H.P. with 1 or 3 Phase options, and can be customized to your needs. Arrangement 4 direct drive standard. Mounting, electrical, CFM, dimensions, and other specifications available upon request.

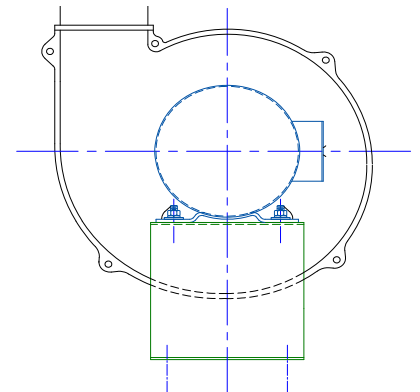
Shown below is our normal discharge options, consult our experts for custom options and applications.



CW Bottom Horizontal Discharge



CW Top Horizontal Discharge



CW Up Blast Discharge

Fume-A-Vent Engine Sensor Control Panel Diagram 3 H.P.

Date 2/14

Part No. CBS-X-XXX-X

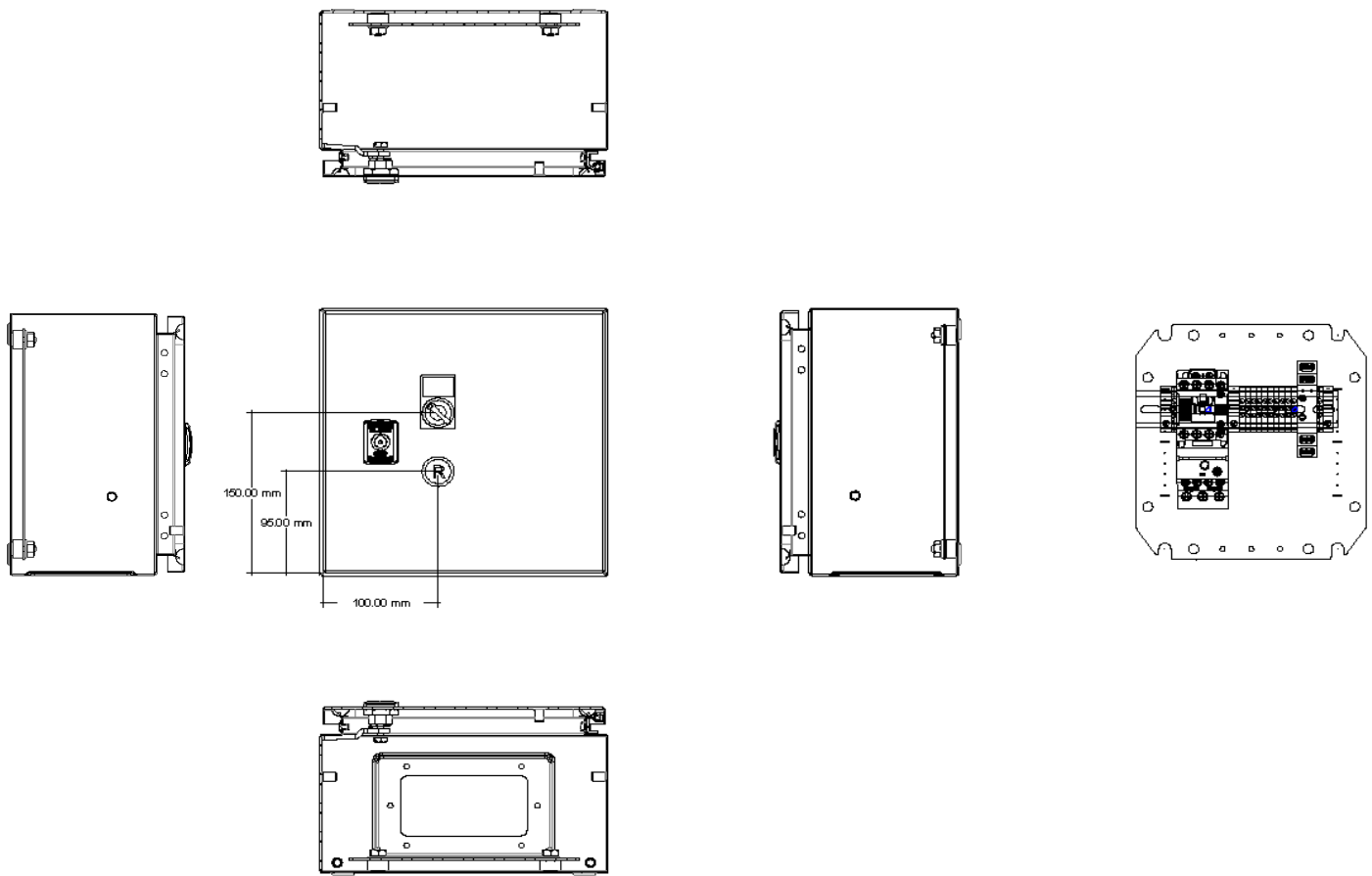
Control Panels

TAB 19-C-1

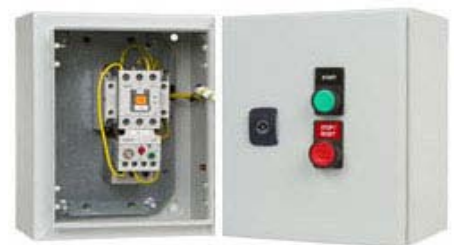
Fume-A-Vent Control Panel Enclosure Drawing. shown below. This drawing applies to all 230V Panels, up to 3 H.P. Our Control Panels come standard with 3-way (HAND-OFF-AUTO) switch and reset button, and low voltage landing terminals. Motor starts, contractor and thermal overloads also included.

Standard Dimensions shown below, with orthographic drawing of the entire enclosure. More information available upon request. Please contact our experts for more information.

Final wiring and appearance may change once final layout and needs are decided upon.



Standard Control Panel shown with on/off switch.





QUICK-FIT



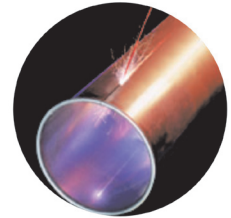
THE WORLD'S FASTEST DUCTING

Q-F puts the squeeze on costly conventional duct installation.

Q-F is a snap! No complicated cutting, no riveting, no braising or welding are required. One Q-F clamp connects sections together in seconds. Branches, diverters, elbows - all adapt easily to your existing duct and may be taken apart and re-used or cleaned without special tools.

Q-F is easy to install, easy to align, and it's strong!

Q-F clamps are so easy to install, they almost install themselves. Simply place the clamp over the Q-F rolled lip ends and snap! The extraordinary strength of Q-F's specially machined double rolled lips provides a solid, straight run. The patented Q-F clamp connects the rolled ends. Snap the Q-F clamp and you have the strongest, safest, most re-usable dust-extraction piping available today. No special instructions or skills are needed to assemble a Q-F system. Install new lines, clean out lines or make changes to existing duct runs anytime you need to with Q-F.



LASER WELDED SEAM

Q-F adapts to your every need; connect to the old or bring in the new.

Q-F has everything you need in galvanized or stainless steel parts:

- * **LASER WELDED** pipe in diameters from 3" to 24"
- * Branch fittings in all sizes and shapes
- * Elbows 30°, 45°, 60°, 90°
- * Larger custom sizes and special adapters
- * Blast Gates, Diverter Valves, Hoods, Manifolds.

Q-F adjusts to fit - without complicated measurements.

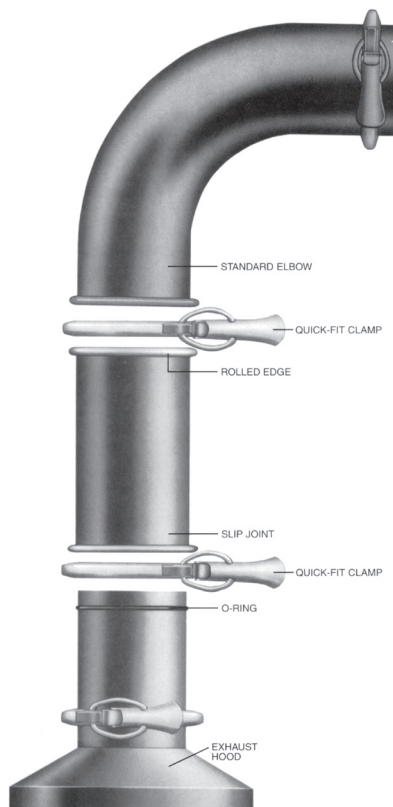
Planning to add, remove, or replace dust-extraction piping? Q-F's adjustable fittings slide together to create the precise length. No need for time wasted on exact measuring and precision cuts. Simply slide on and fit to your desired length, a few inches or a few feet. Need a different length for a new run? Just re-use your Q-F components and re-fit, again reducing your cutting and fabricating time.

Q-F saves you time and money.

Just how much money can you save using Q-F? Call us! You will be pleased with the savings and all the built-in advantages you get with Q-F.

Whether you need just a few parts, or help with a complete system, Q-F has 4 to 5 day lead time.

Call for a free sample.



Air Cleaning Specialists Inc.
826 Horan Drive
Fenton, MO 63026
Toll Free: 800-878-5030
Fax: 636-349-0556
www.ductingsystems.com



Air Cleaning Specialists
826 Horan Drive
Fenton, MO 63026
866-455-2130 - Phone
636-349-0556 - Fax
www.fumeavent.com
info@fumeavent.com

EF. NUMBER

17-092022

QUOTE NUMBER

340XX

REVISION

C

JOB NAME

FIREHOUSE/EMS

DRAWING FOR:

FIREHOUSE DRAWINGS SMART

17-092022A

SHEET / VIEW NAME

TOP VIEW

DRAWN: CODY BINGAMAN

CHECKED: RYAN GRAYEM

SYSTEM TYPE

FIREHOUSE

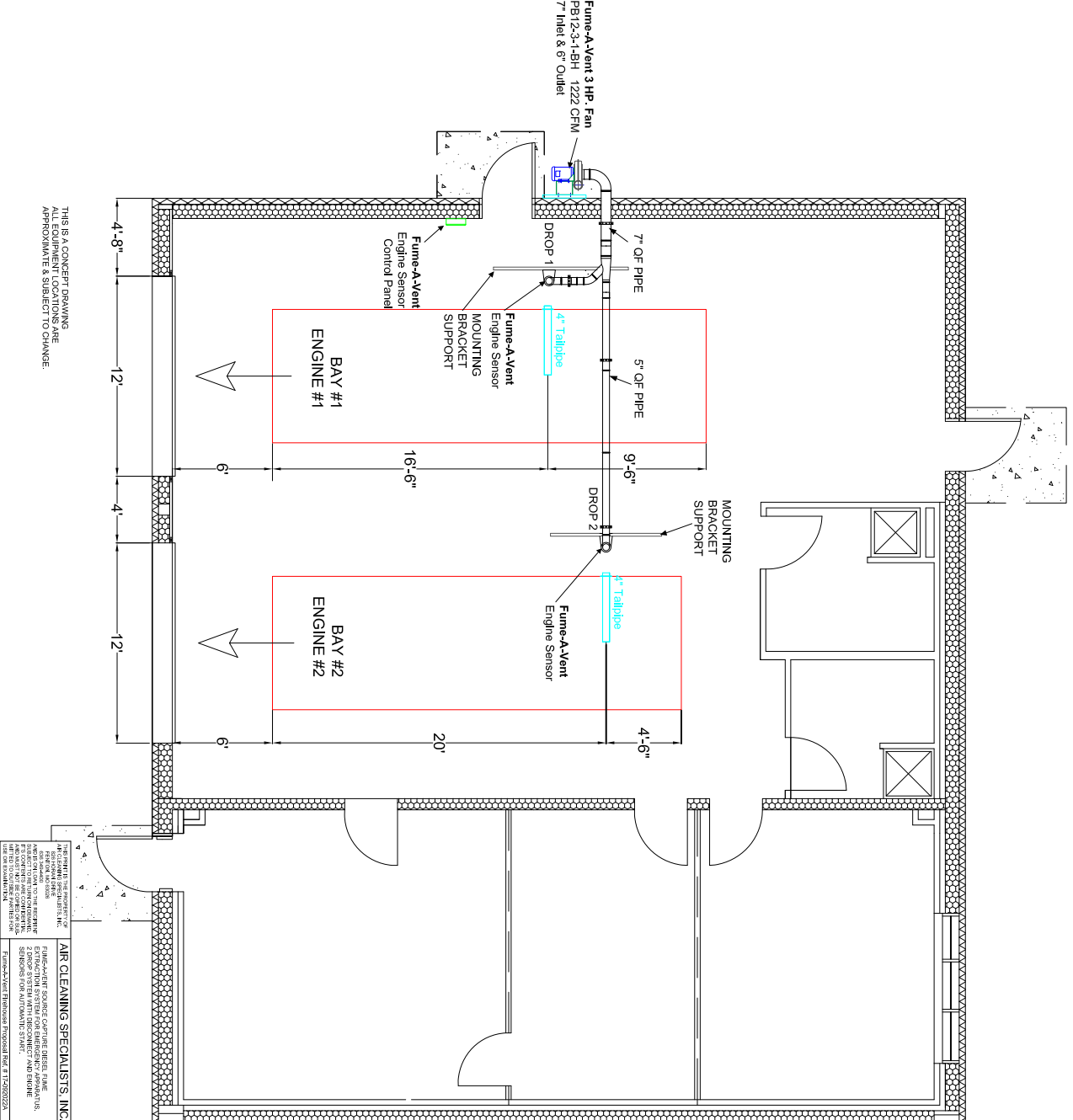
DWG DATE	GAUGE
----------	-------

9/21/17 STD.

PAPER SIZE	SHEET
------------	-------

1" x 8.5" 1 OF 1

SCALECUSTOM



THIS IS A CONCEPT DRAWING
ALL EQUIPMENT LOCATIONS ARE
APPROXIMATE & SUBJECT TO CHANGE.

Q003248- DUCT EXPORT
MAS QUOTE# 84035