

## Fume-A-Vent Control Panel w/Timer Overview

Date 2/14

Part No. CBS-X-XXX-X

Control Panels

TAB 19-A

Fume-A-Vent offers State-of-the-Art Control Panels, that are able to control our systems with limited installation required. Our Panels feature a mild- steel NEMA 4 enclosure with 3-way (HAND-OFF-AUTO) switch and reset button, and low voltage landing terminals. These Control Panels have a built in timer that is adjustable in length, ideal for Fire Station Systems with Engine Sensors.

Maintenance shops and Dealerships can also utilize these control panels, to further automate their exhaust extraction systems.

Control Panels are based on the Building Power, and Fan/Blower that is to be run. We offer 1 and 3 Phase, 120V, or 230V, with 1, 2, 3, 5, or 7.5, H.P. blower ratings. **\*\*120V not available in 3 Phase.**

We recommend a licensed electrician install our panels.

Enclosure Dimensions: 10" H x 10"W x 6"D (Up to 5.0 H.P.)  
12" H x 10" W x 8"D (7.5 H.P.)

Other Control Panel options available including multiple motor starts, multiple timers, among other custom controls. Please consult our experts if you require anything not accommodated for in our standard panels.

Part Number	HP	Voltage	Phase	Description	Timer
CBS-1-230-1-T	1	230	1	For use with a 230V, 1HP, 1PH Fan and compatible 230V, 1PH source.	Y
CBS-2-230-1-T	2	230	1	For use with a 230V, 2HP, 1PH Fan and compatible 230V, 1PH source.	Y
CBS-3-230-1-T	3	230	1	For use with a 230V, 3HP, 1PH Fan and compatible 230V, 1PH source.	Y
CBS-5-230-1-T	5	230	1	For use with a 230V, 5HP, 1PH Fan and compatible 230V, 1PH source.	Y
CBS-7.5-230-1-T	7.5	230	1	For use with a 230V, 7.5HP, 1PH Fan and compatible 230V, 1PH source.	Y
CBS-1-230-3-T	1	230	3	For use with a 230V, 1HP, 3PH Fan and compatible 230V, 3PH source.	Y
CBS-2-230-3-T	2	230	3	For use with a 230V, 2HP, 3PH Fan and compatible 230V, 3PH source.	Y
CBS-3-230-3-T	3	230	3	For use with a 230V, 3HP, 3PH Fan and compatible 230V, 3PH source.	Y
CBS-5-230-3-T	5	230	3	For use with a 230V, 5HP, 3PH Fan and compatible 230V, 3PH source.	Y
CBS-7.5-230-3-T	7.5	230	3	For use with a 230V, 7.5HP, 3PH Fan and compatible 230V, 3PH source.	Y
CBS-1-120-1-T	1	120	1	For use with a 120V, 1HP, 1PH Fan and compatible 120V, 1PH source.	Y
CBS-2-120-1-T	2	120	1	For use with a 120V, 2HP, 1PH Fan and compatible 120V, 1PH source.	Y
CBS-3-120-1-T	3	120	1	For use with a 120V, 3HP, 1PH Fan and compatible 120V, 1PH source.	Y
CBS-5-120-1-T	5	120	1	For use with a 120V, 5HP, 1PH Fan and compatible 120V, 1PH source.	Y
CBS-7.5-120-1-T	7.5	120	1	For use with a 120V, 7.5HP, 1PH Fan and compatible 120V, 1PH source.	Y

\*\*Custom Enclosures available at request. Please consult our experts to discuss your options.



AIR CLEANING SPECIALISTS, INC.  
826 Horan Drive Fenton, MO 63026  
866 455-2132 Fax 636 349-0556  
www.fumeavent.com info@fumeavent.com

This drawing has been copyrighted  
and is the property of  
Air Cleaning Specialists, Inc.

# Fume-A-Vent Control Panel Wiring Diagram (230V 3 Phase)

Date 2/14

Part No. CBS-X-XXX-X

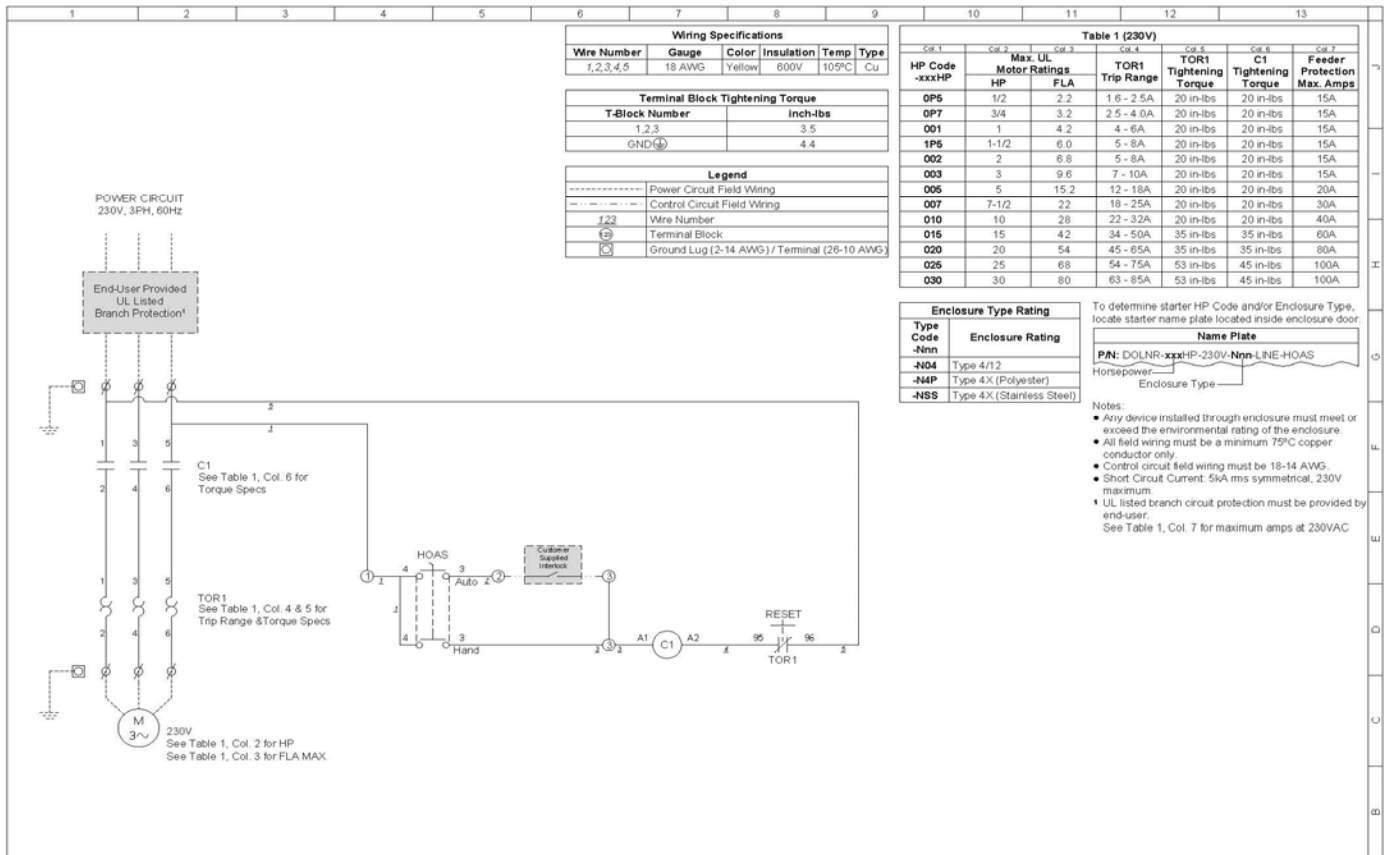
Control Panels

TAB 19-B-1

Fume-A-Vent Control Panel Enclosure Drawing, shown below. This shows our 230V, 3 Phase wiring diagram. This diagram is the same for all H.P. ratings we offer.

Additional information available upon request. Some Panels may vary if timers, additional low voltage connections, or other hardware is added. Please consult our experts for more information, and for custom Control Panels.

A disconnect switch is normally required for 3 phase Control Panels for local/national codes.



Shown: Standard 230V Control Panel with On/Off Switches.



# Fume-A-Vent Engine Sensor Control Panel Diagram 3 H.P.

Date 2/14

Part No. CBS-X-XXX-X

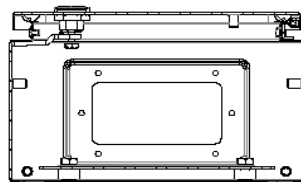
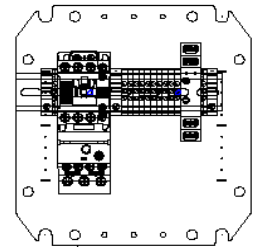
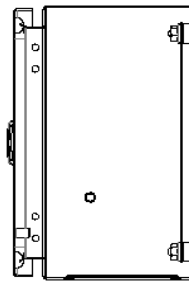
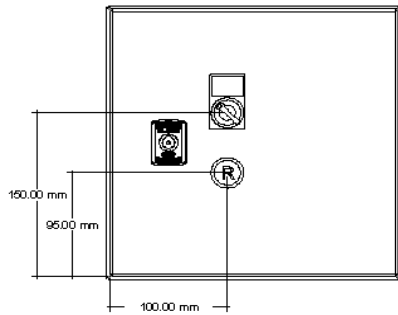
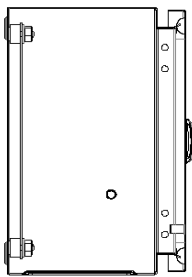
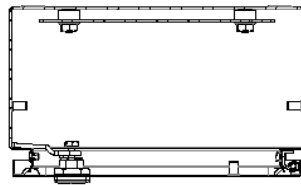
Control Panels

TAB 19-C-1

Fume-A-Vent Control Panel Enclosure Drawing. shown below. This drawing applies to all 230V Panels, up to 3 H.P. Our Control Panels come standard with 3-way (HAND-OFF-AUTO) switch and reset button, and low voltage landing terminals. Motor starts, contractor and thermal overloads also included.

Standard Dimensions shown below, with orthographic drawing of the entire enclosure. More information available upon request. Please contact our experts for more information.

Final wiring and appearance may change once final layout and needs are decided upon.



Standard Control Panel shown with on/off switch.

